

Task 7: Find it!

Can you go on a minibeast hunt? How many of these can you find.
Are there any others you found?

Minibeasts Scavenger Hunt How many can you find?



a worm

a bumblebee

a ladybird

a large snail

a snail with a
stripy shell



a slug

a woodlouse

a spider

an ant

a moth

a caterpillar

a beetle

an earwig

a crane fly
(daddy long legs)

a hoverfly

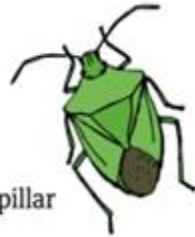
a wasp

a fly

a yellow centipede

a green shield bug

a dragonfly



Life on the Tyne



The optional homework tasks this half term all link to our 'Life on the Tyne' topic.

You can use your learning in school to help you with each task.

Please do bring your homework in to share with the whole class.

You can complete the tasks in any order and do as many as you wish.

Have fun learning and investigating our amazing River Tyne!

Task 1: Visit the Tyne!

The Tyne river flows through Northumberland, Newcastle and out to the coast. Can you take a trip to visit it? What can you see there - maybe take a photograph or draw a picture. How many different locations can our class visit? Did you know children can travel on the metro for free on the weekend!!



Task 2: Map it!

What do you see on your way to school? Can you make a map of your journey? How would you make it so it would be easy for others to follow? Do you need to include a



Task 3: Newcastle is AMAZING!



Why is it wonderful to live in Newcastle? So many reasons. Can you create a poster to advertise our fantastic city! Remember to include all the things that make Newcastle unique!

Task 5: Rock Legend?

Log into your Times Table Rock Stars and practise your 2, 5, and 10 times tables - Can you become a Rock Legend?



Task 5: Henri Matisse

We are learning all about the artist Henri Matisse. Can you find out more about him and his different styles of artwork. Maybe you could create your own piece in the style of Henri Matisse.



Task 6: Maps !

Do you play any games that use maps? Have you got an atlas in your home or could you borrow one from a library?



Can you use a maps app to find where you live?

Which human and physical features can you spot on our map of school?

Could you add some of the changes to our school as a result of the building work?

