

OUR Y2 CURRICULUM

AUTUMN

Science



Animal Survival

History



Local and UK Maps



UK and China



Art



Drawing



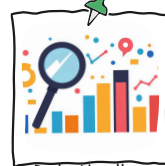
Painting

DT

Computing



Computer Systems



Data Handling

Music

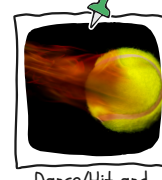


Tony Chestnut



Rock Pool Rock

PE



Dance/Hit and Return



Yoga/Games and Tactics

PSHCE



Friendship



Kindness

RE



Judaism and Christianity

OUR TOPICS

Global Warriors

Why do plants and animals need each other to survive?

Diversity
Why do we need diverse habitats?

Community
How do plants and animals work together in a community?

Interdependence
How are plants and animals interdependent?

Beauty
What is the role of beauty in nature?

In this topic, through exploration of different habitats, the children learn about how most animals are adapted to their habitat in order to survive. They begin to understand the impact humans are having on habitat loss. One of our key texts in English, the Unexpected Visitor, helps the children understand about the impact of overfishing. Each class also learns about their aquatic class animal (Seahorses and Turtles) and thinks about how we can protect the Ocean's they live in.

Regent Farm Respects

Would you rather live in the UK or China?

Respect
Why is it important to respect different countries and their cultures?

Tradition
How do our traditions compare to those of other cultures?

Identity
How important to our identity is the place we call home?

Comparison
What can we learn from making a comparison between the UK and China?

Get your plane tickets at the ready, Year 2 are flying to China! The children will explore the landscape of China and see what the similarities and differences are between places in the UK and the other side of the world. They will think about human and physical features of these two places, as well as their very different weather patterns! The topic will conclude with a debate about where they would most like to live, and why.

OUR Y2 CURRICULUM

Regent Farm First School



Science

History

Geography

Art

DT

Computing

Music

PE

PSHCE

RE

SPRING



Plants



Great Fire of London



Living Things and Habitats



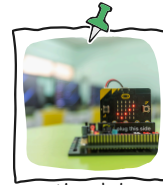
Journey of the River Tyne



Collage



Mechanisms - Fire Engines



Microbits



Coding



Grandma Rap



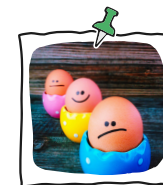
Drawa



Gym/Ball Games



Run, Jump, Throw Games and Tactics



Feelings



Jobs



Judaism



Easter and Passover

OUR TOPICS

Time Travellers

Can anything good come from a disaster?

Duty
Why is duty important to life?

Change
How can change make things better?

Community
Do we all belong to a community?

Influence
When is it okay to influence others?

This half-term the children will travel back in time to 1666 and the time of the Great Fire of London. This will be the main focus for all our discussions about change and how we can investigate life in the past. The children will explore different sources and discuss their validity. They will show creativity and determination in Design and Technology when planning and making fire engines, asking questions about how things work to help with the design and assembly process.

My World and Me

How do our surroundings affect our lives?

Community
Which communities do people belong to along the River Tyne?

Change
How does a river change along its course?

Pride
Does the River Tyne instil pride in its communities?

Identity
How has the River Tyne influenced people's identities?

The children will build on their work on the Great Fire of London by looking at the Great Fire of Newcastle and Gateshead, and begin to understand more about the rich history of our city. To further understand their locality, they will visit the Quayside as well as Tynemouth, looking at how the landscape around the River Tyne changes as you move from source to mouth. The children will use a range of skills to discuss and represent their new learning including mapwork in geography and writing adverts in English to celebrate all things Newcastle!

OUR Y2 CURRICULUM

Regent Farm First School



SUMMER

Science	History	Geography	Art	DT	Computing	Music	PE	PSHCE	RE
Habitats / Seeds & Bulbs	Local History - Shipbuilding			Woodwork-Bridges	Word Processing	Mini-beast Music	Run, Jump, Throw Hit and Run	Staying Safe	Christianity and Judaism
Growing Up & Lifecycles	Nurses Who Help Us			Food - Healthy Wrap	Book Creator	Tanczmy Labada	Team Games/Rounders	Growing and Health	Judaism Purim

OUR TOPICS

Gizmos and Gadgets

Can building a ship change the future?

Hope
Why is the Carpathia a symbol of hope?

Achievement
How have past achievements influenced our lives today?

Legacy
What legacy has shipbuilding left behind?

Necessity
Was shipbuilding necessary to the people of Newcastle?

This half-term the children will be travelling back in time and learning about the importance of shipbuilding. The children will be exploring artefacts and learning about two amazing ships, "The Titanic" and "The Carpathia". Throughout the topic the children will gain an understanding of why these two ships are famous and the legacy they have left behind. They will also consider why the Carpathia was a symbol of hope.

Healthy - Inside and Out

What makes a healthy lifestyle?

Conflict
How can we be strong when faced with conflict?

Wellbeing
How can we look after our physical and mental wellbeing?

Care
Can we show care for ourselves and others?

Empire
What is the effect of Empire on our lives?

Get your chefs' hats at the ready! The children will be thinking carefully about their own physical and mental health. We will consider what actions we can take to support our whole bodies and what foods help keep us healthy. The children will use this knowledge to design and create a healthy wrap. The children will also look at famous nurses from History including Mary Seacole and Florence Nightingale learning how they helped to keep the nation healthy in difficult times.